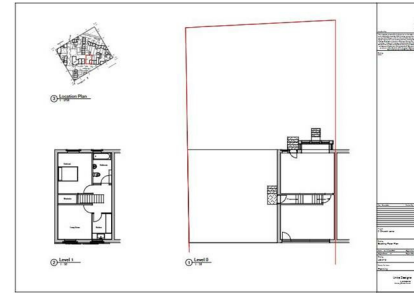
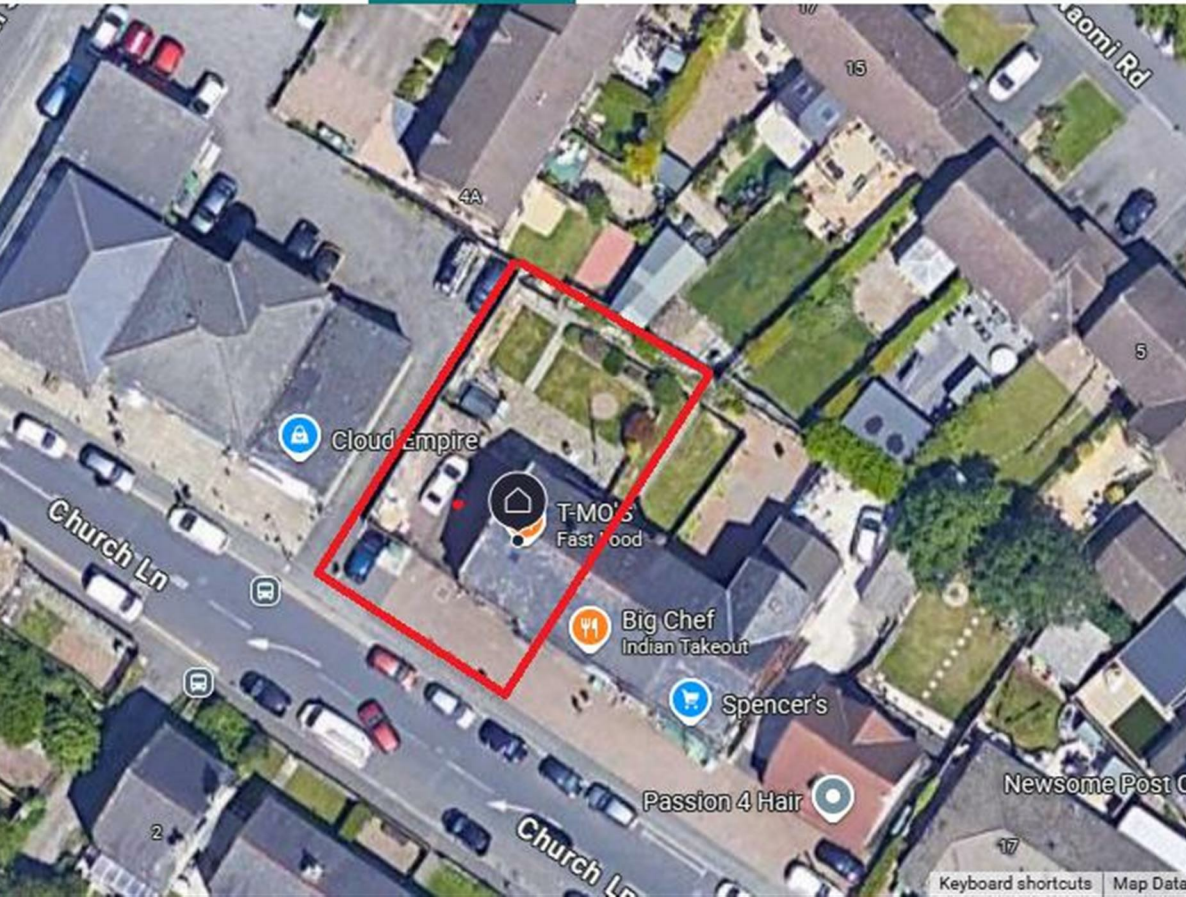


Church Lane, Newsome, HD4 6JE
Auction Guide £220,000
Council Tax Band: A



Being sold via Secure Sale online bidding. Terms & Conditions apply. Starting Bid £220,000

Open House Estate Agents are proud to be selling this Commercial Property with living quarters on the First Floor and a thriving business on the Ground Floor with a long term tenant attached, in the popular thriving location of NEWSOME.

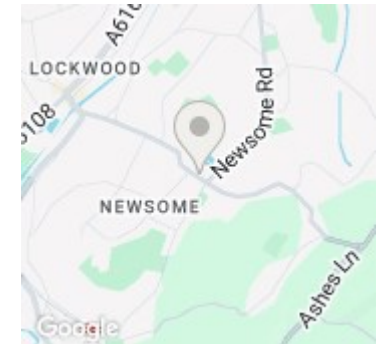
The Property occupies an end plot with a large plot of land which has PLANNING PERMISSION GRANTED for an additional building of the same dimensions, thus providing an excellent investment opportunity to create a further Commercial/Domestic property next door.

This is really one not to be missed as an Investor seeking a property with a Long Term Commercial Tenant in Situ providing regular income, as well as the permission to build a further investment building on the current plot.

Call us now to arrange your viewing - Our lines are Open 24 hours a day, 7 Days a week to take your call !!



Open House Huddersfield



Energy Efficiency Rating		
	Current	Potential
Very energy efficient - lower running costs		
(92 plus) A		
(81-91) B		
(69-80) C	79	
(55-68) D		
(39-54) E		
(21-38) F		
(1-20) G		
Not energy efficient - higher running costs		
England & Wales	EU Directive 2002/91/EC	